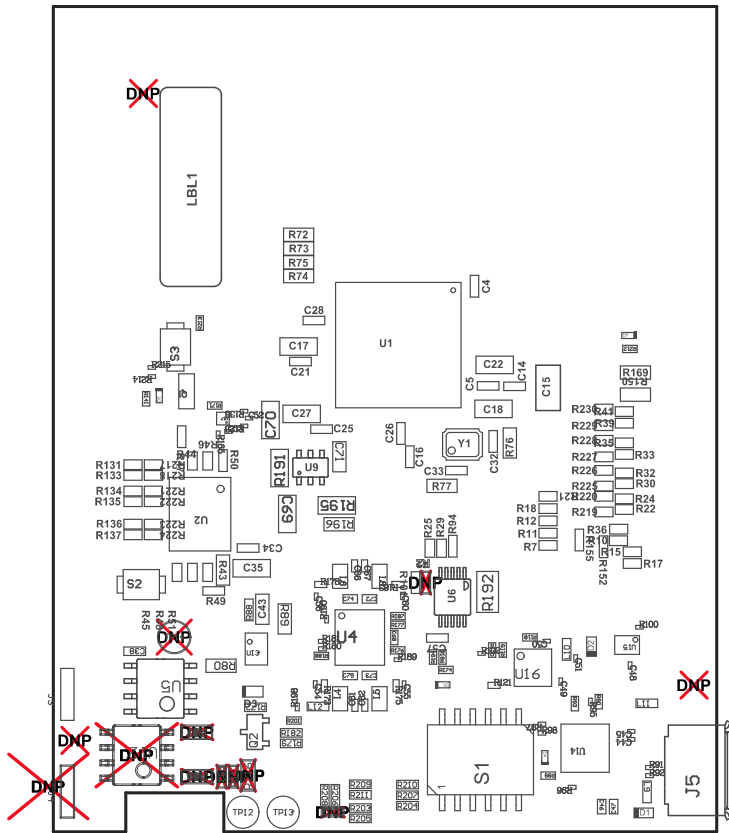
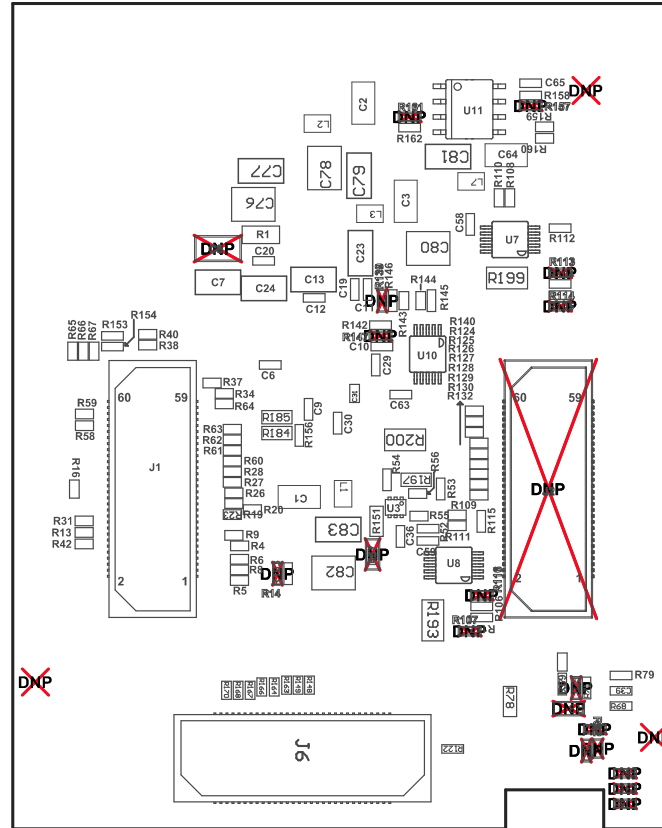


ZZ1 ■ Install label in silkscreened box after final wash. Text shall be 8 pt font. Text shall be per the Label Table in the PDF schematic.  
 ZZ2 ■ These assemblies are ESD sensitive, ESD precautions shall be observed.  
 ZZ3 ■ These assemblies must be clean and free from flux and all contaminants. Use of no clean flux is not acceptable.  
 ZZ4 ■ These assemblies must comply with workmanship standards IPC-A-610 Class 2, unless otherwise specified.  
 ZZ5 ■ INDICATION FOR COMPONENTS D\* ARE GIVEN AT THEIR CATHODE SIDE.



COMPONENTS MARKED 'DNP' SHOULD NOT BE POPULATED.  
 ASSEMBLY VARIANT: 001\_IWR

PCB VIEWED FROM TOP SIDE	BOARD #: PROC073	REV: C	SVN REV: Not In VersionControl
Assembly Layer Top	TID #: N/A		
PLOT NAME = Top Assembly Drawing	GENERATED : 5/28/2020 1:05:27 PM	TEXAS INSTRUMENTS	



COMPONENTS MARKED 'DNP' SHOULD NOT BE POPULATED.  
 ASSEMBLY VARIANT: 001\_IWR

PCB VIEWED FROM BOTTOM SIDE	BOARD #: PROC073	REV: C	SUN REV: Not In VersionControl
Assembly Bottom Layer	TID #: N/A		
PLOT NAME = Bottom Assembly Drawing	GENERATED : 5/28/2020 1:05:29 PM	TEXAS INSTRUMENTS	